



# Management approaches and procedures existing within the European RV community

# Marine Board Position Paper 25 - 2019

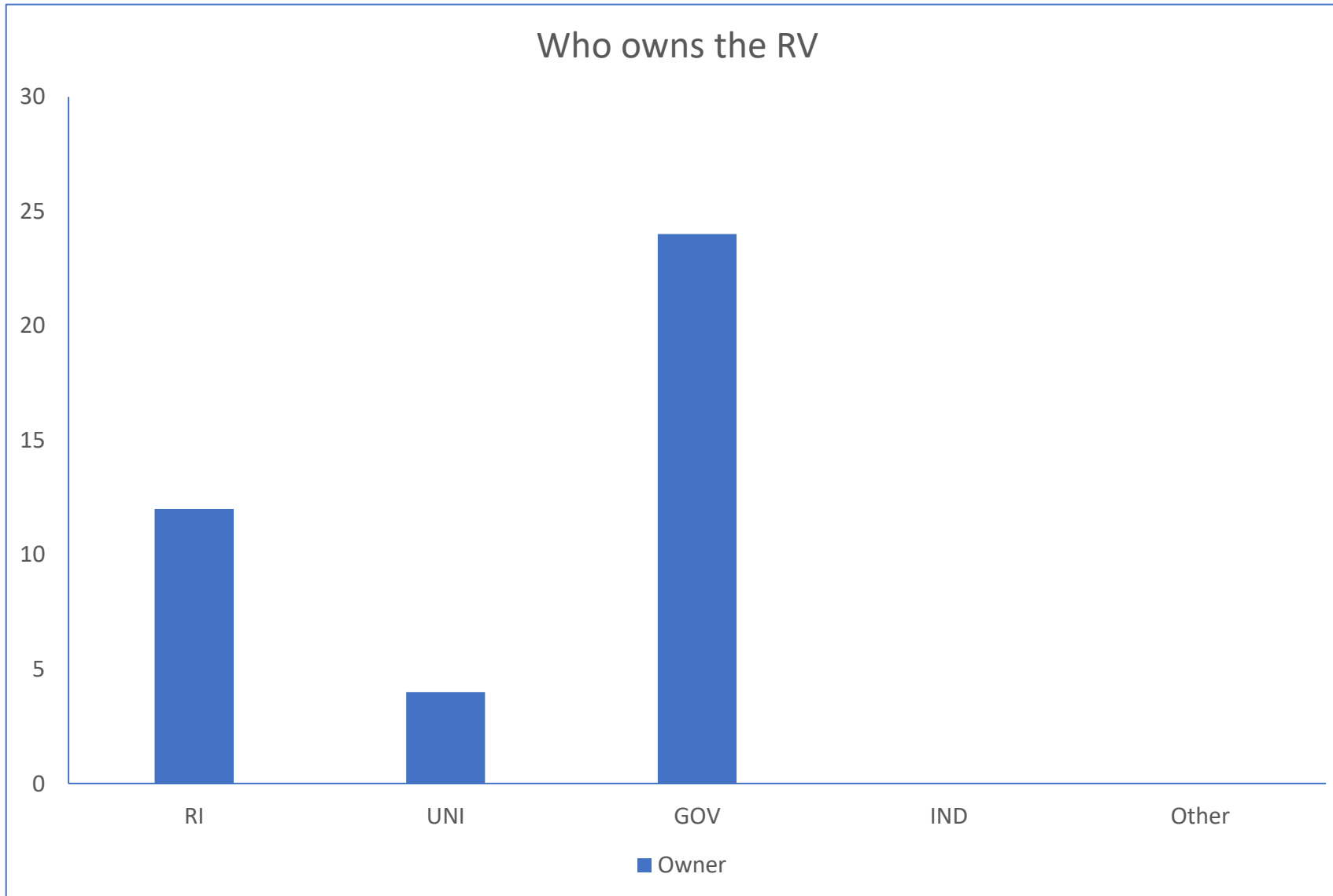
**23 countries operating 99 vessels**

**Questionnaire on management processes**

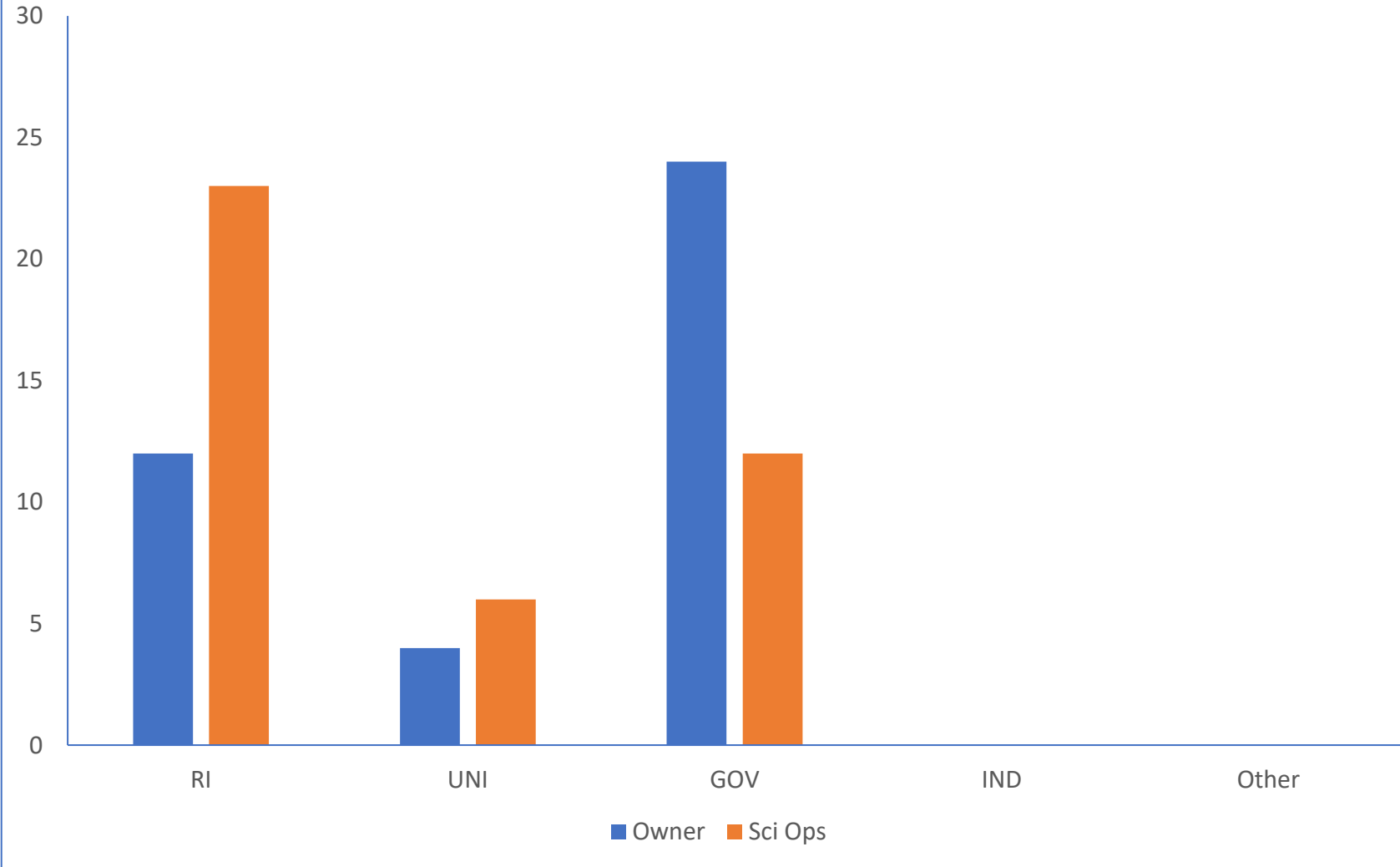
**Simplified version > ERVO members**

**12 countries IE-B-D-NL-F-DK-N-S-FI-P-E-RO**

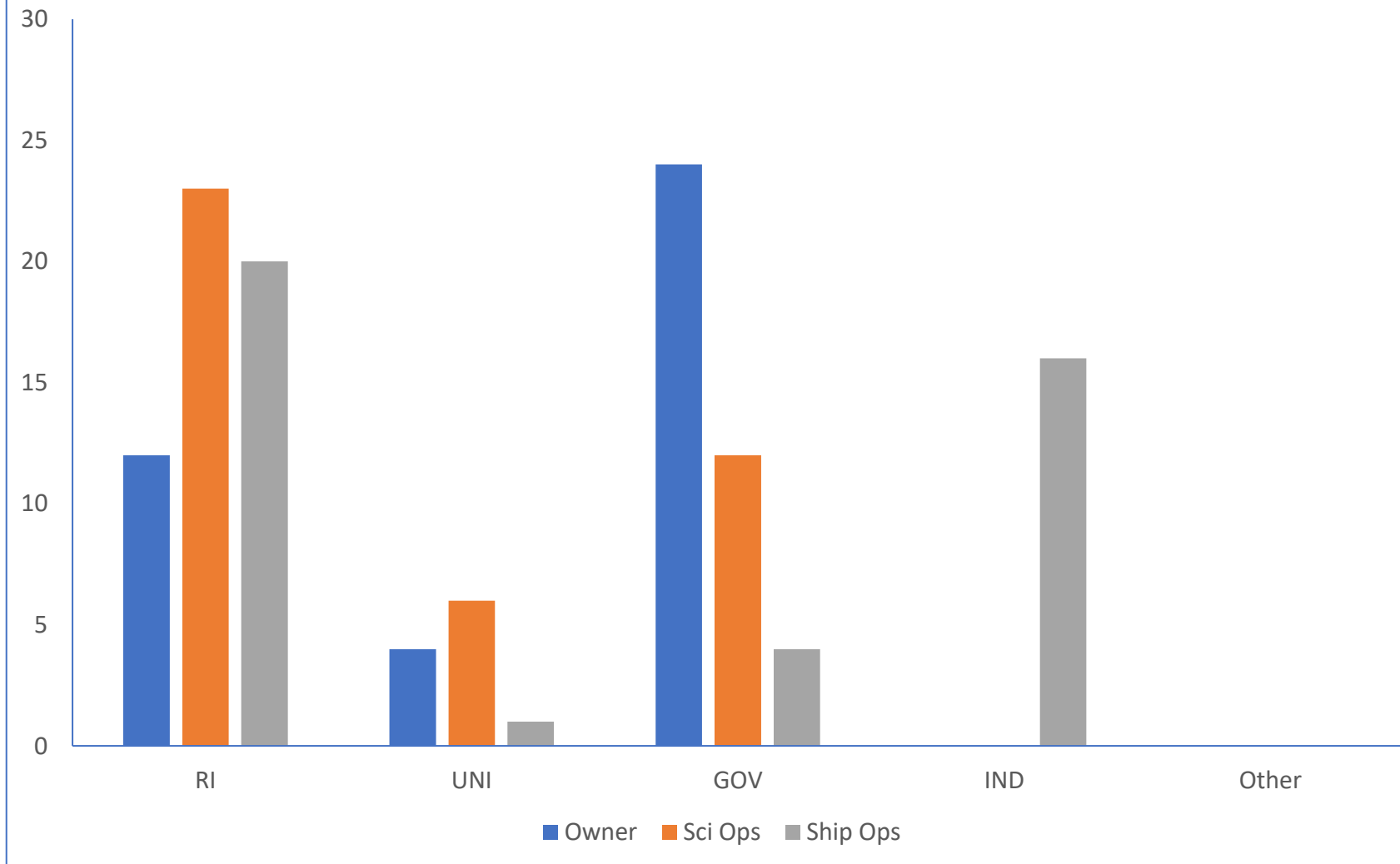
**40 vessels**



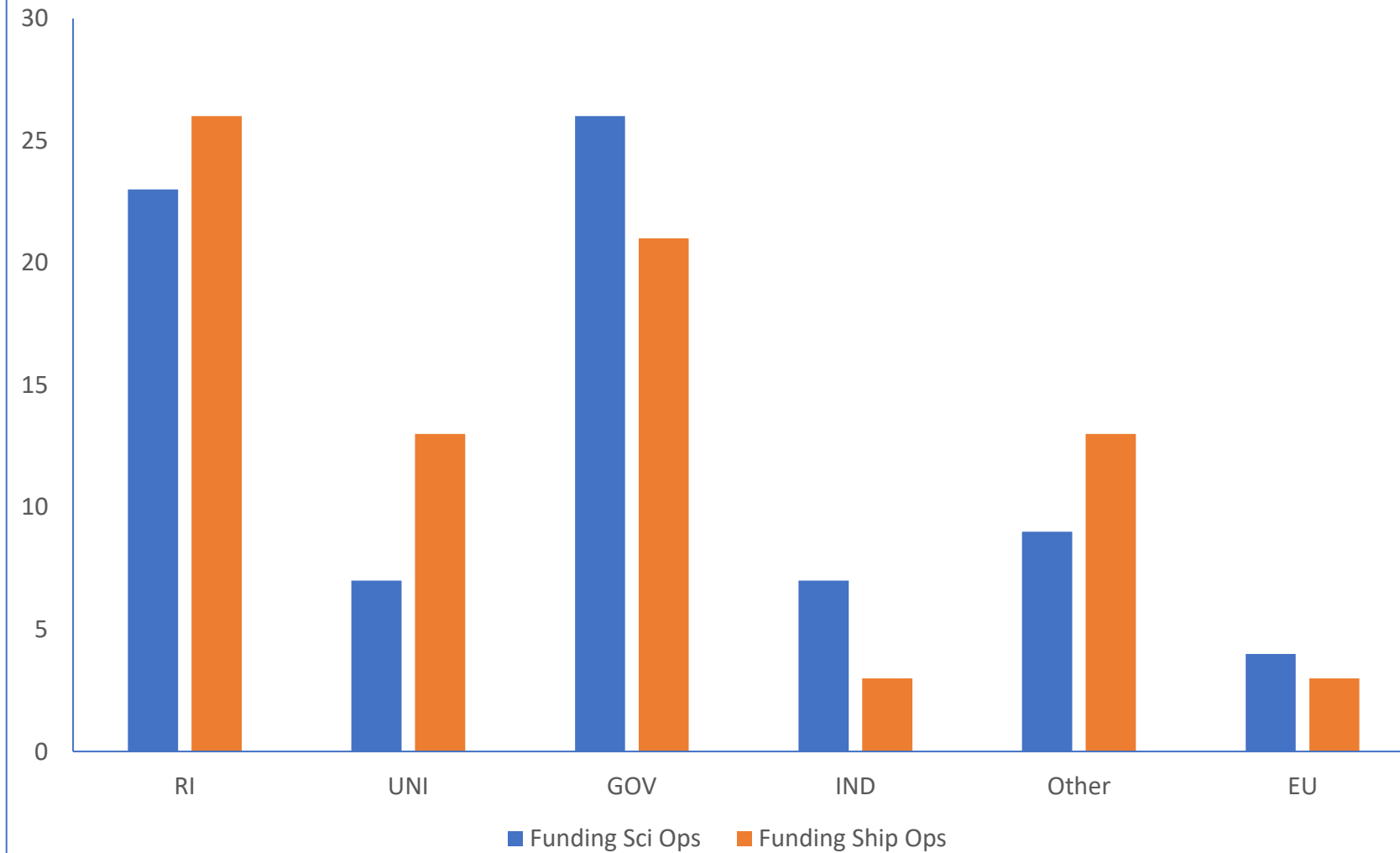
### Who operates the scientific aspect

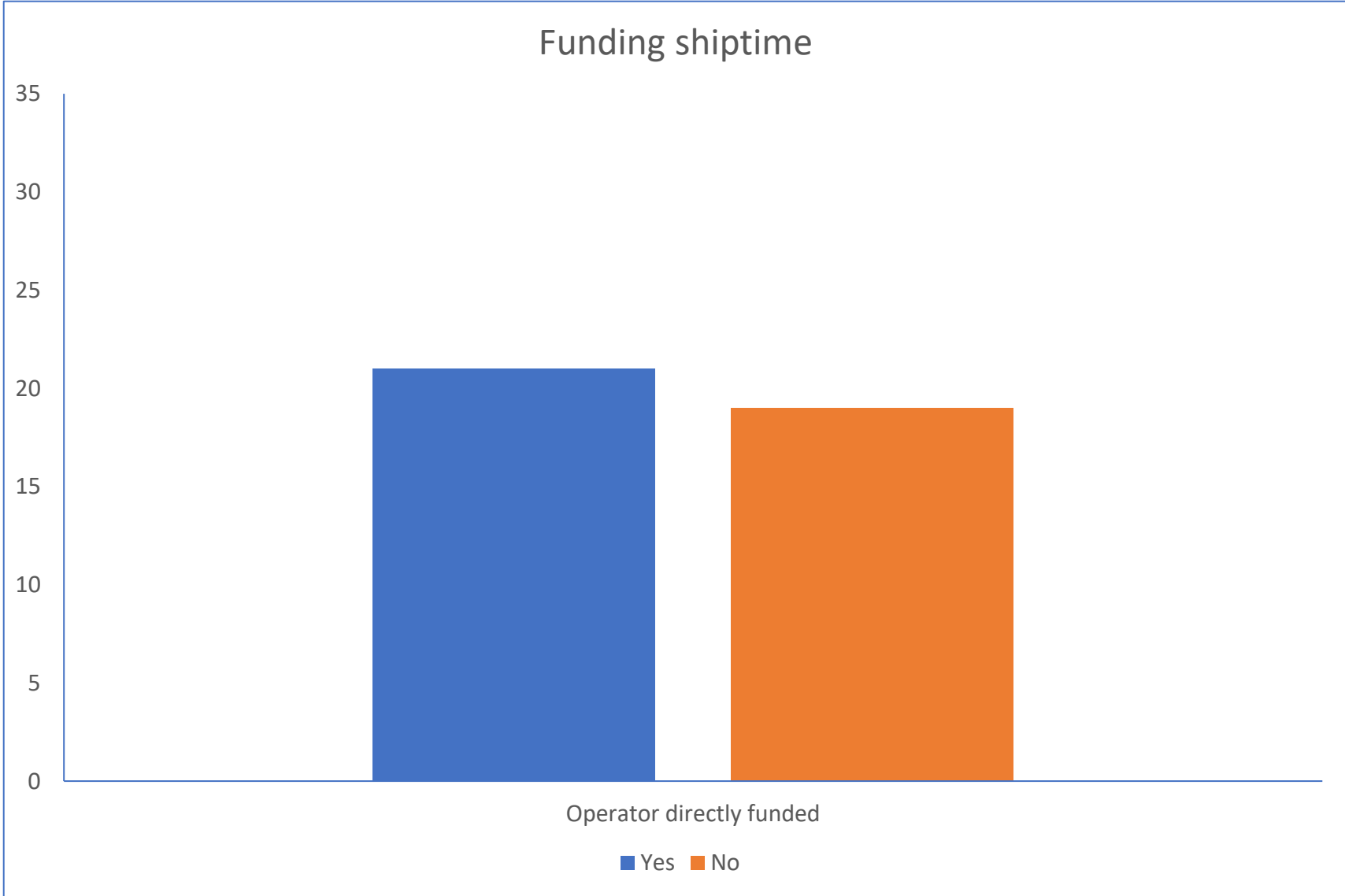


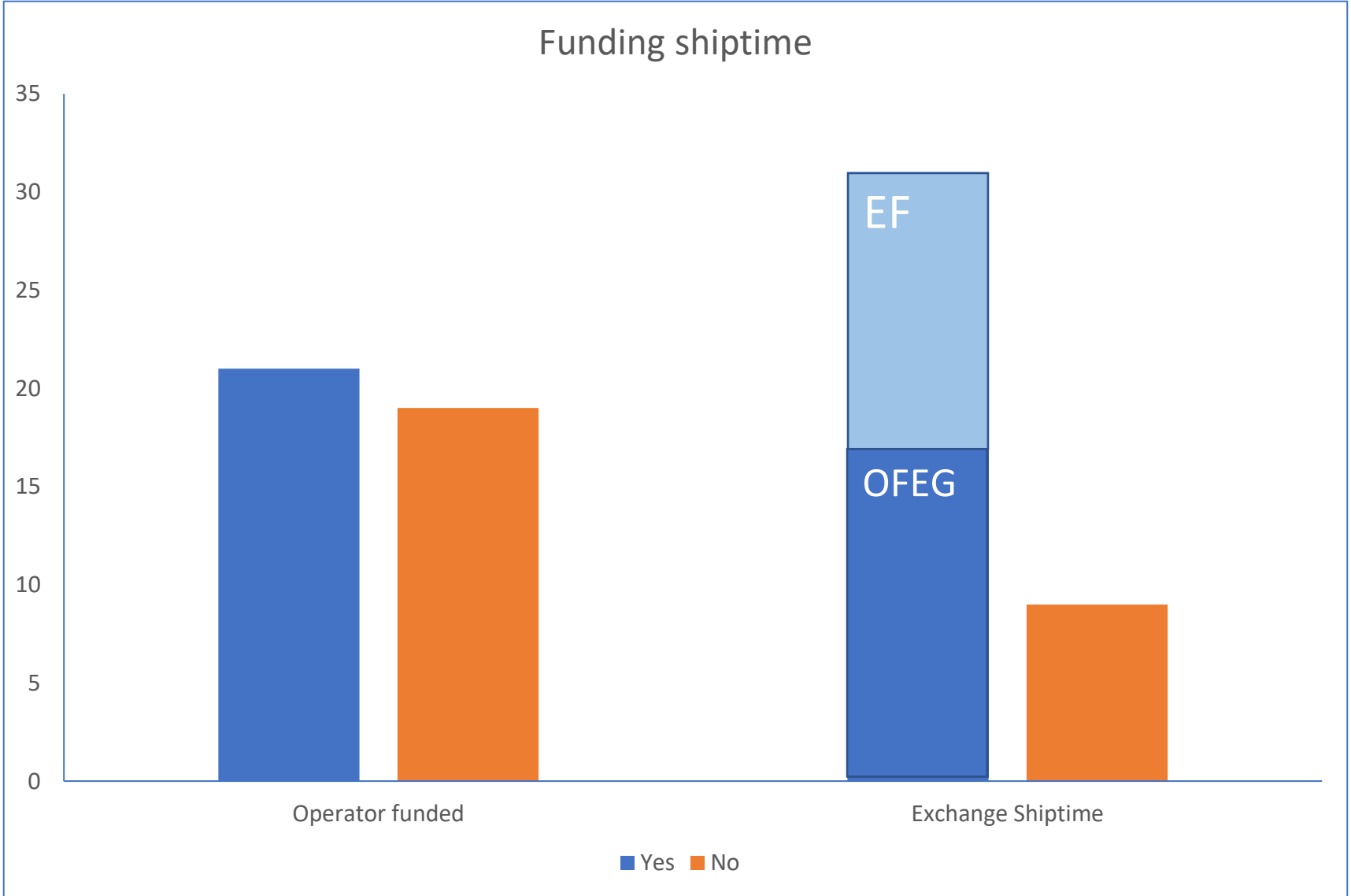
## Who operates the ship?



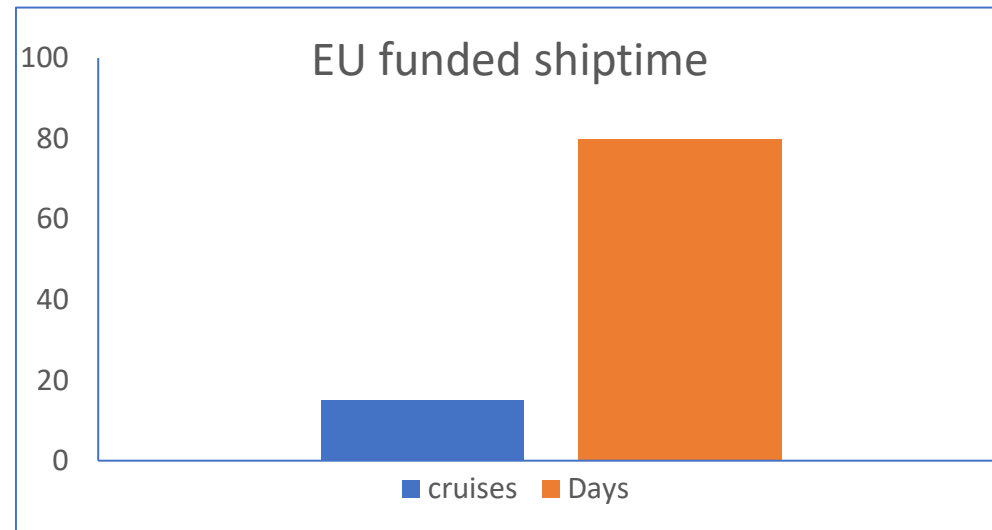
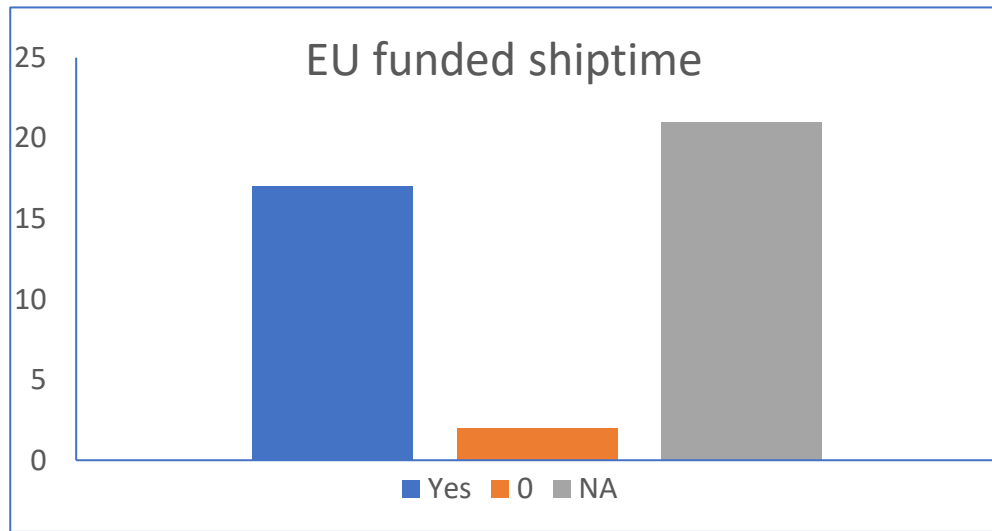
## Funding the Operations

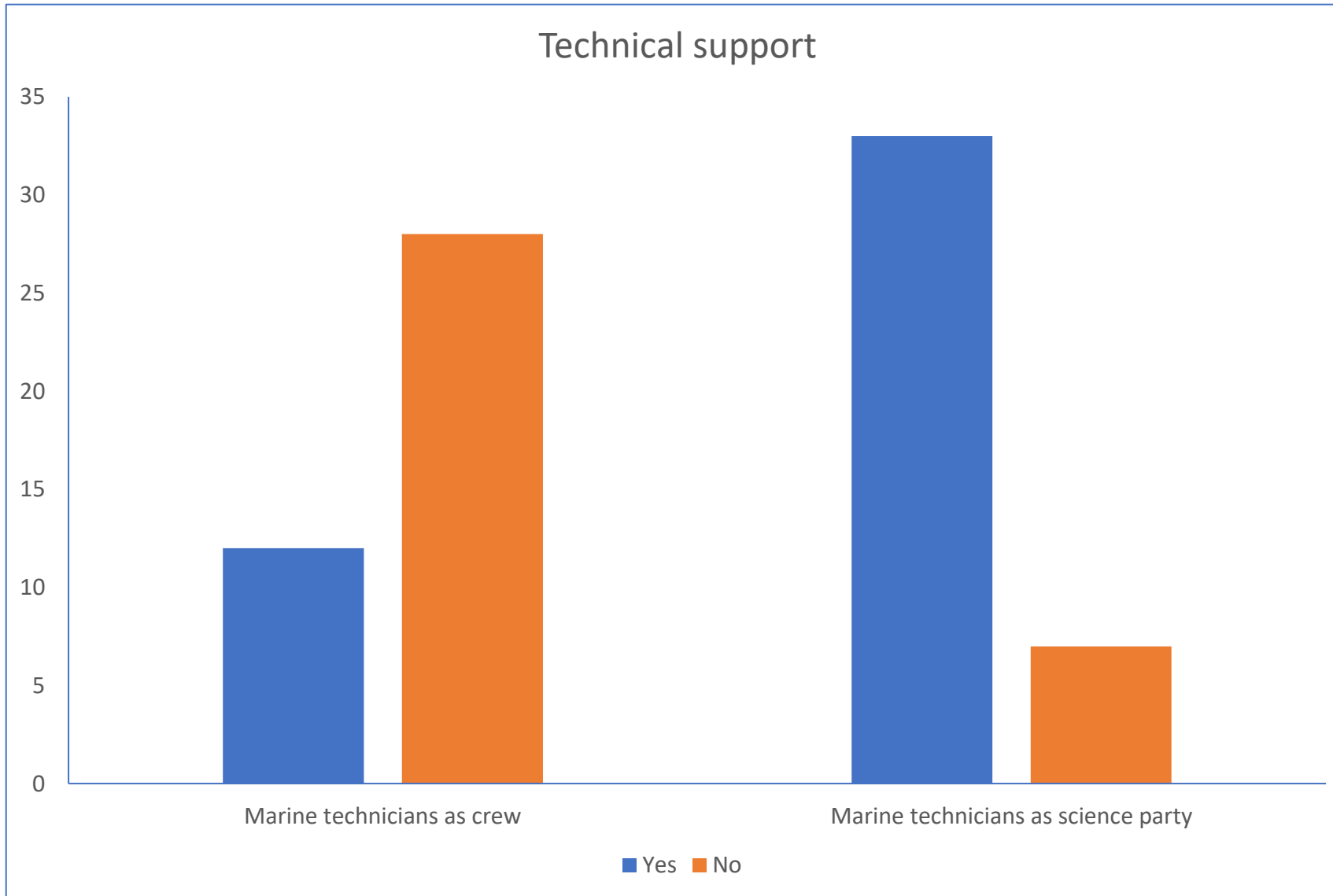


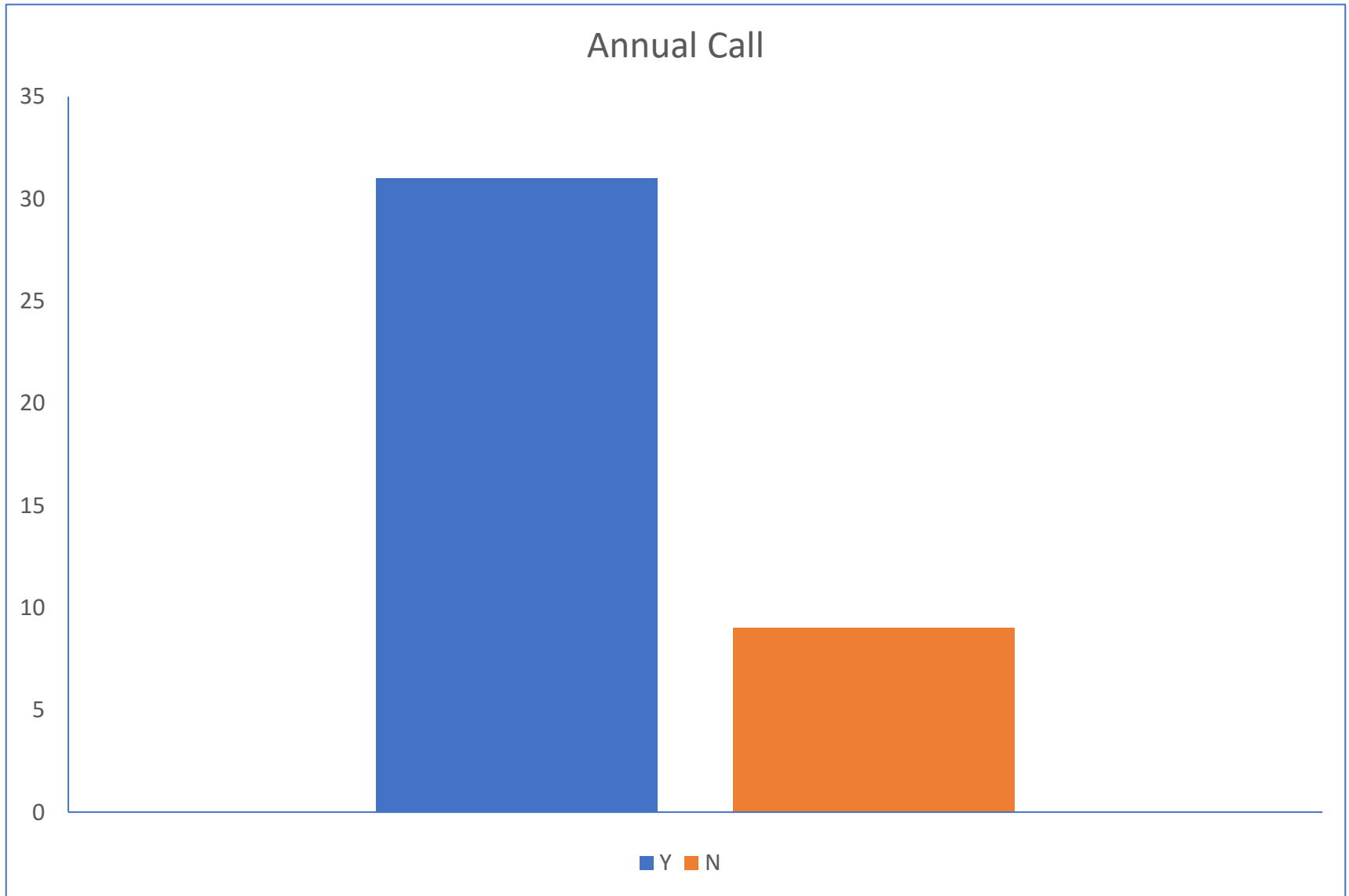


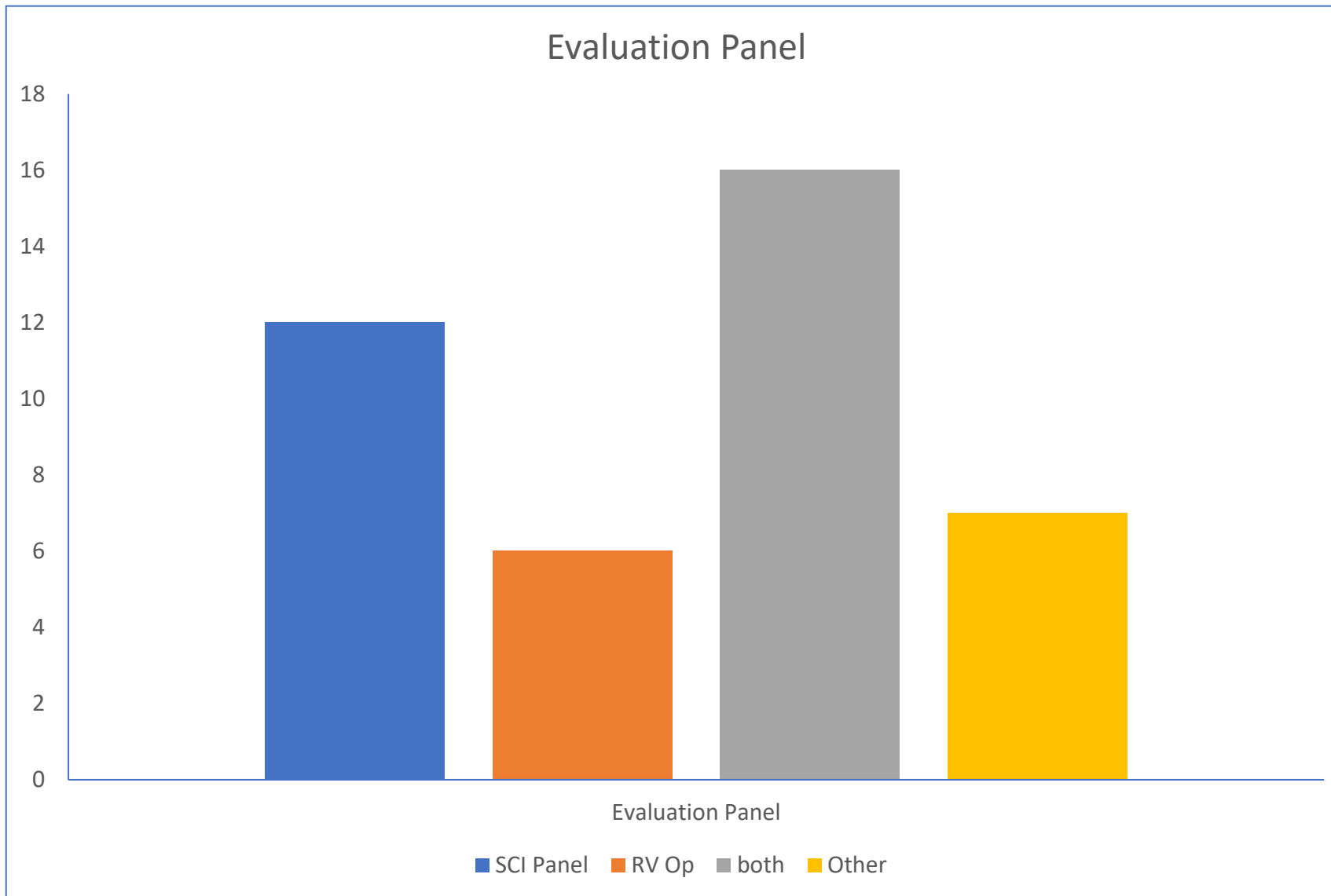


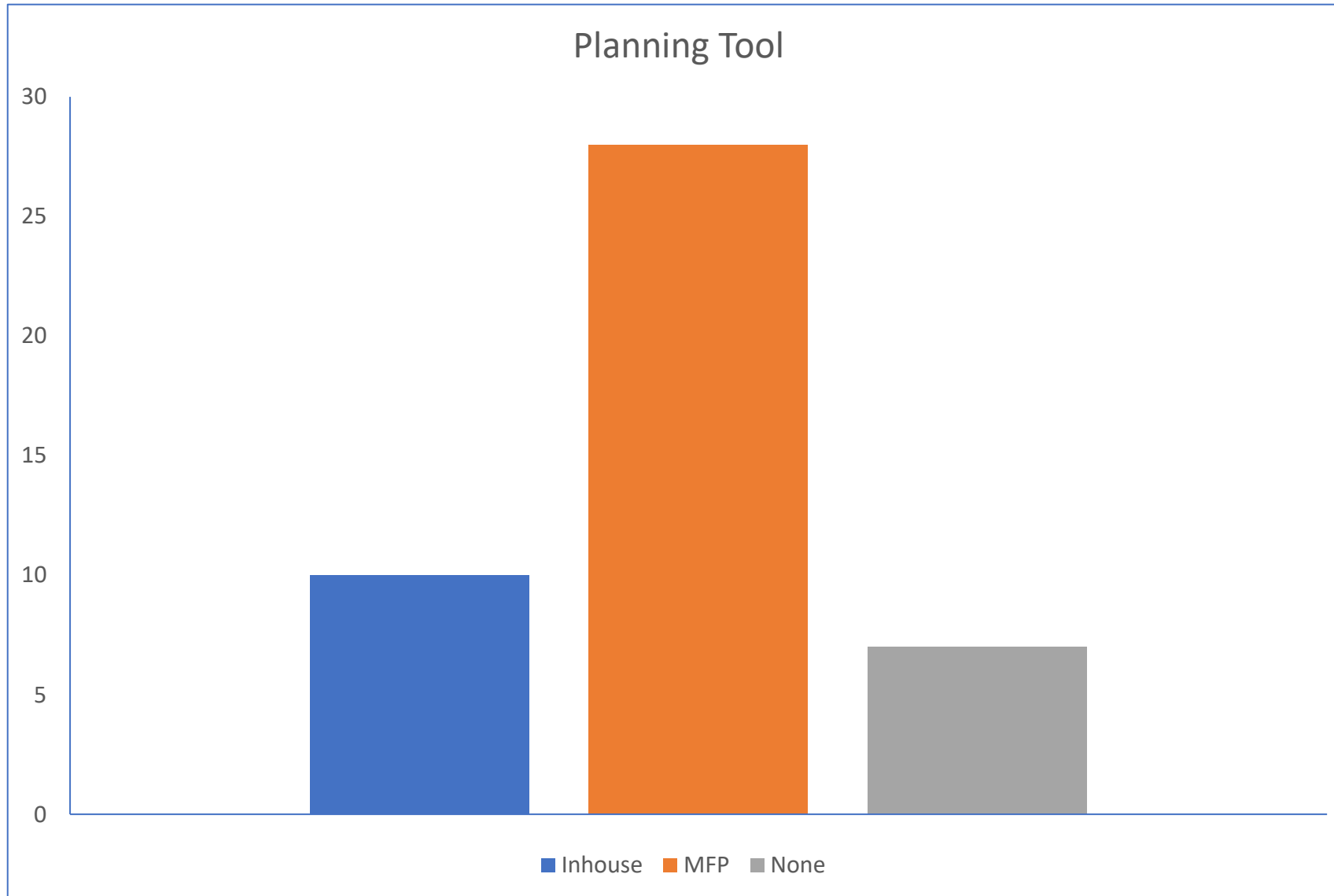




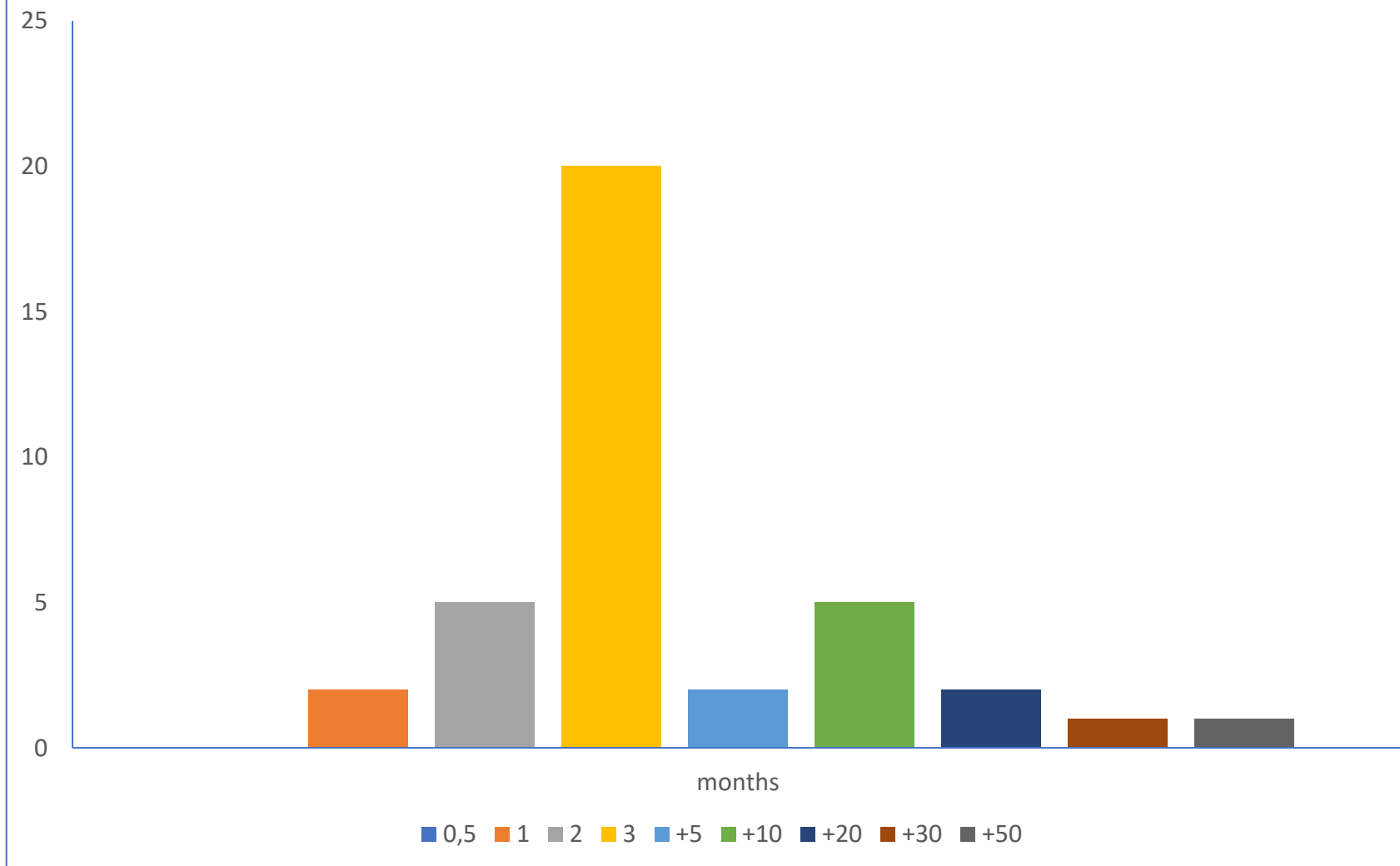




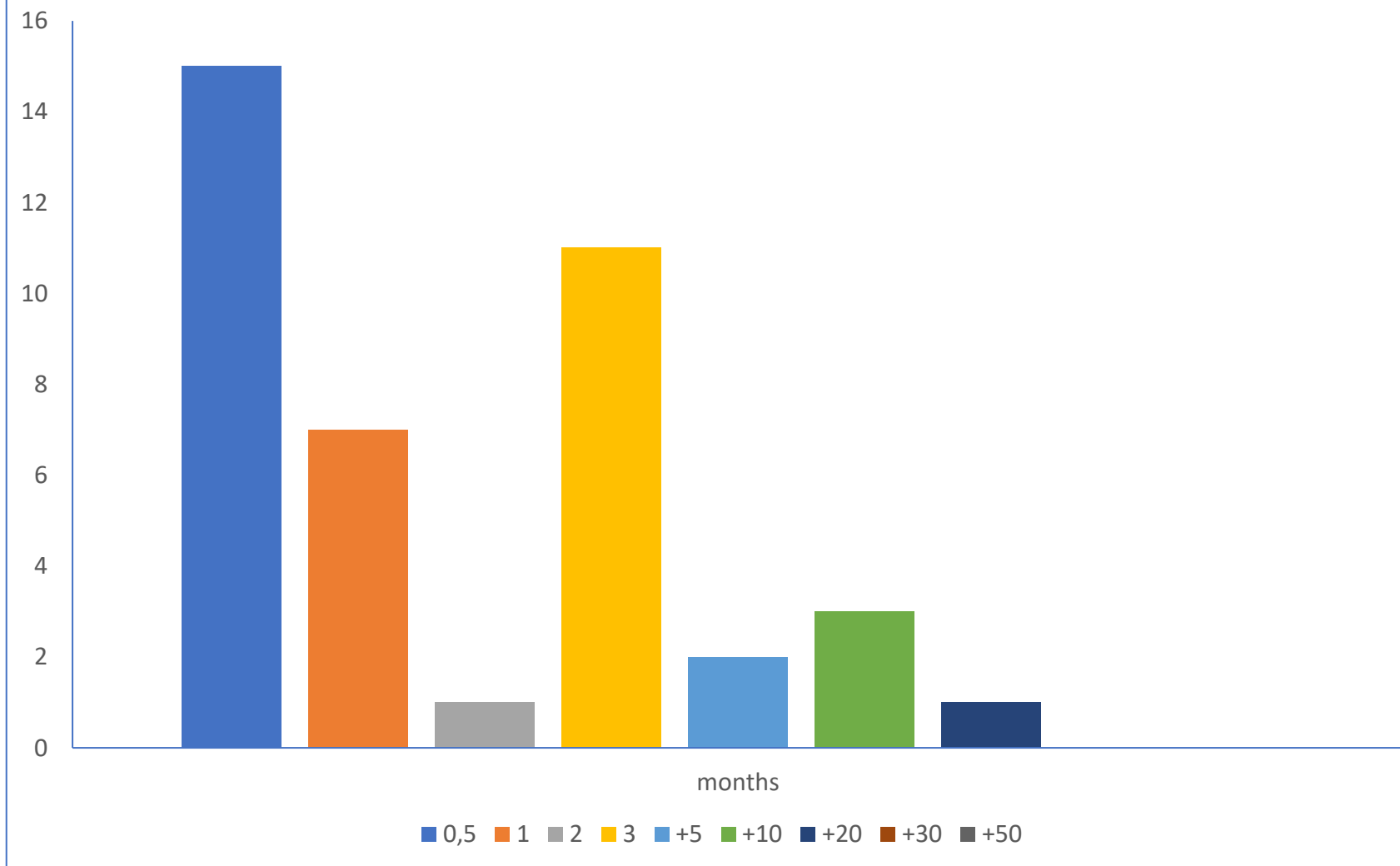




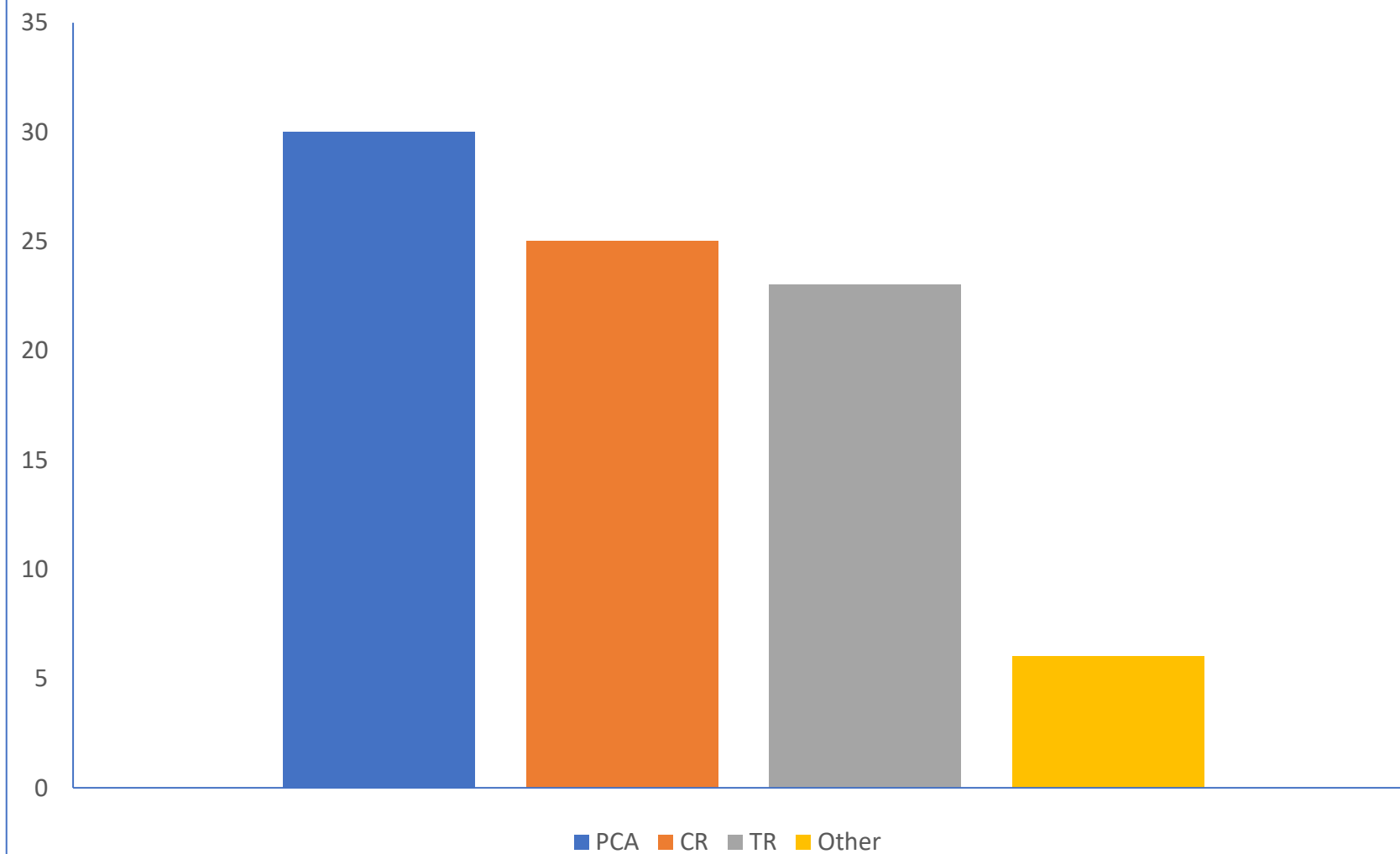
## Lead time for cruise scheduling



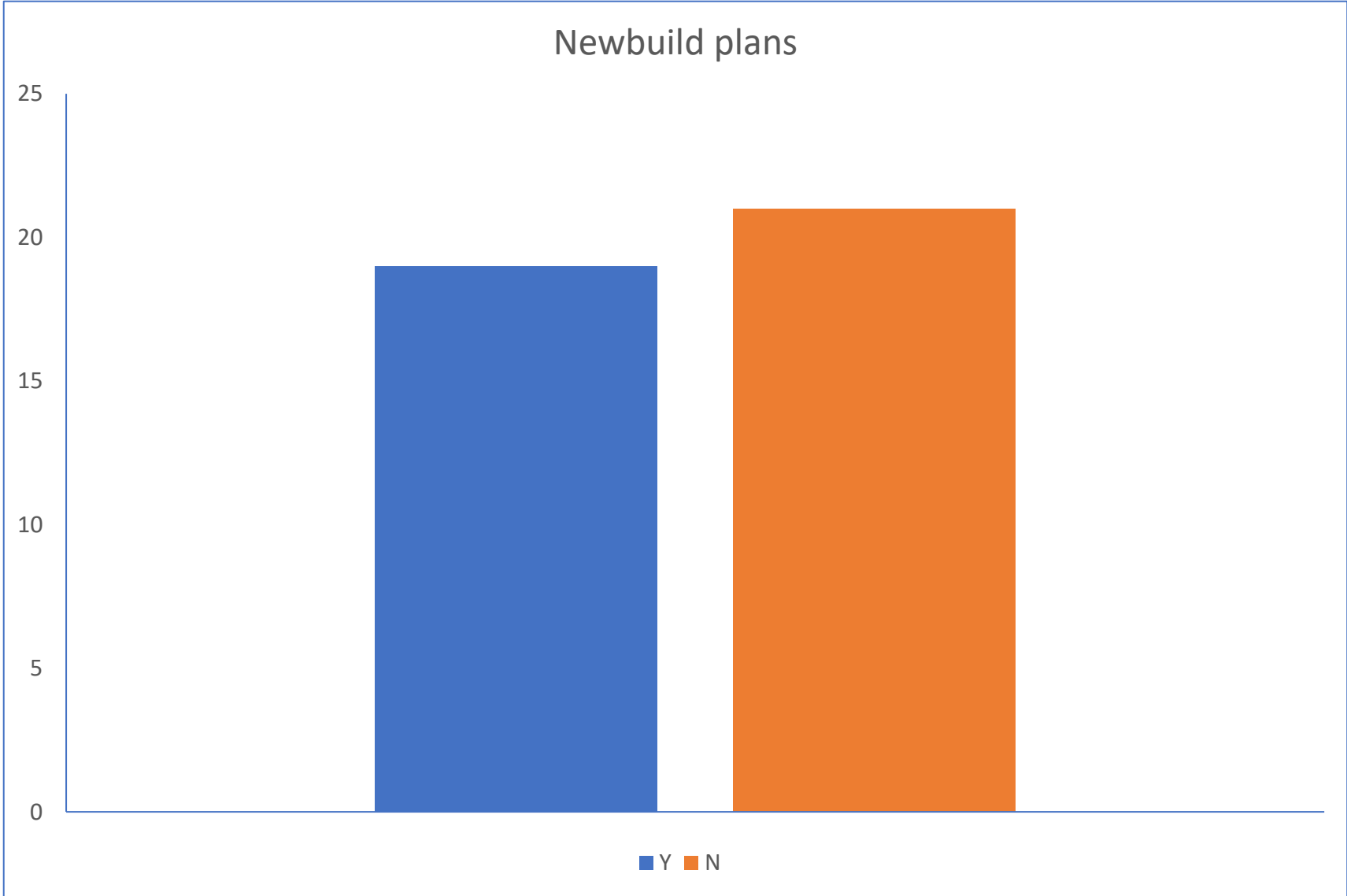
## Lead time for cruise planning



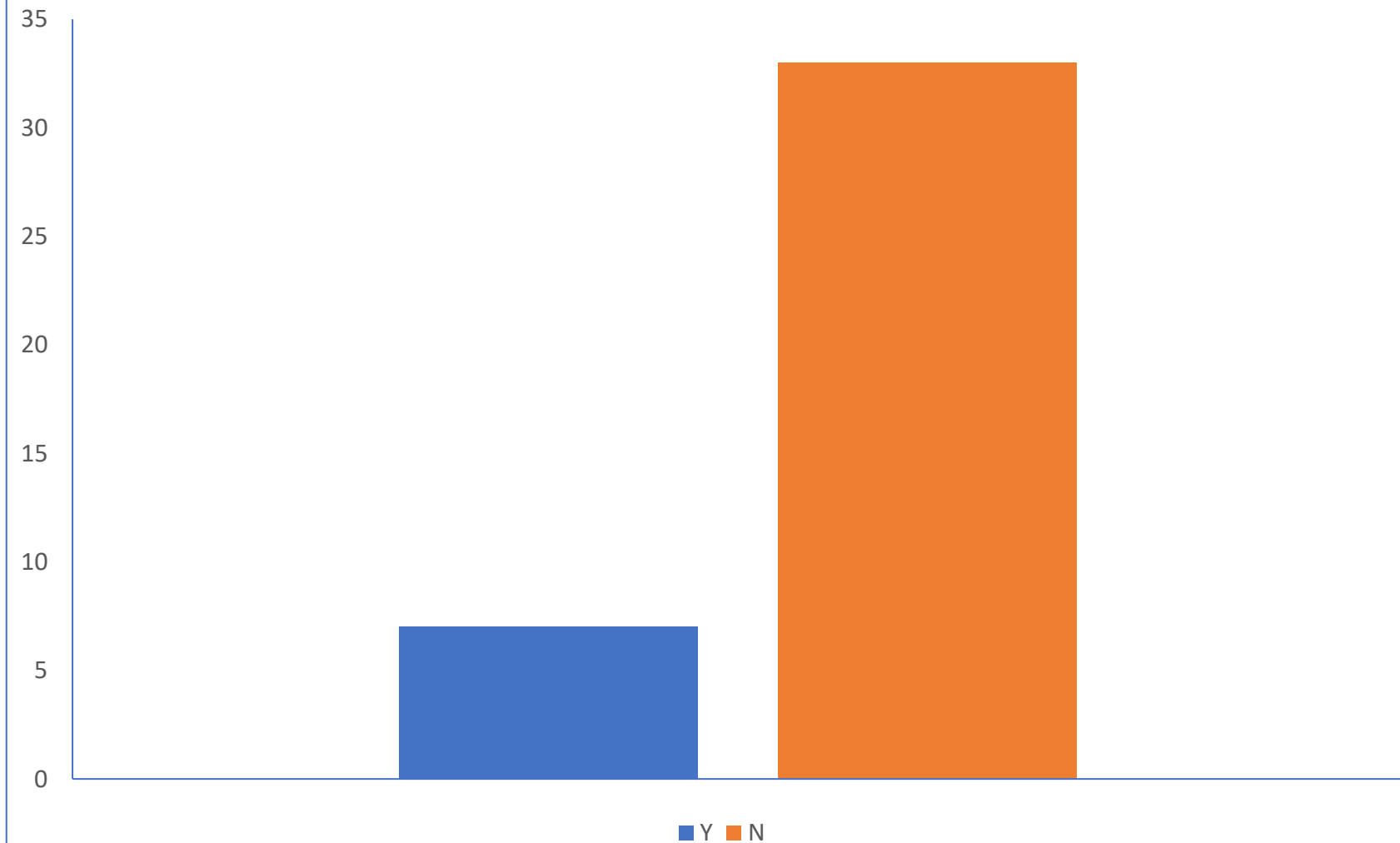
## Post cruise assessment



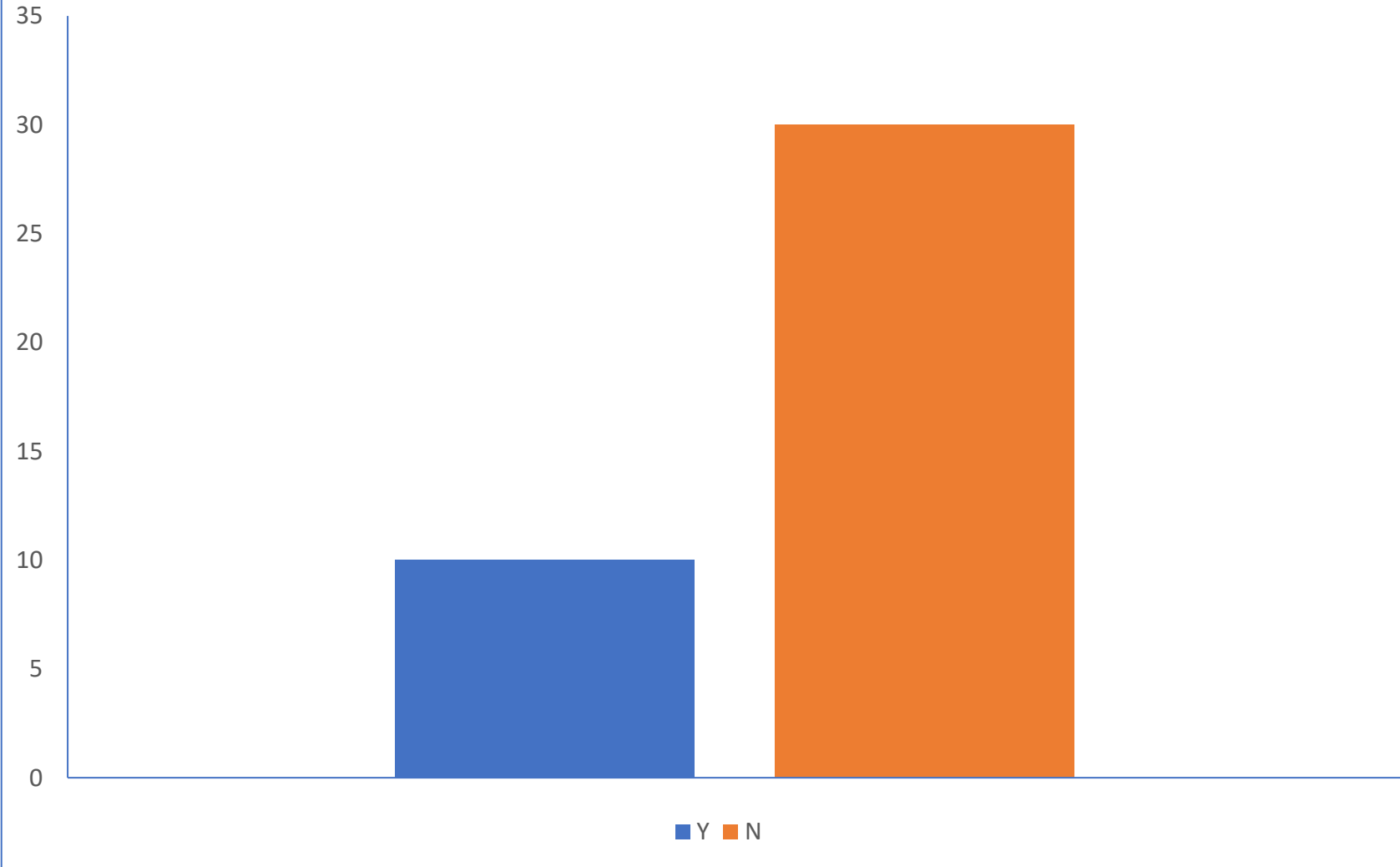


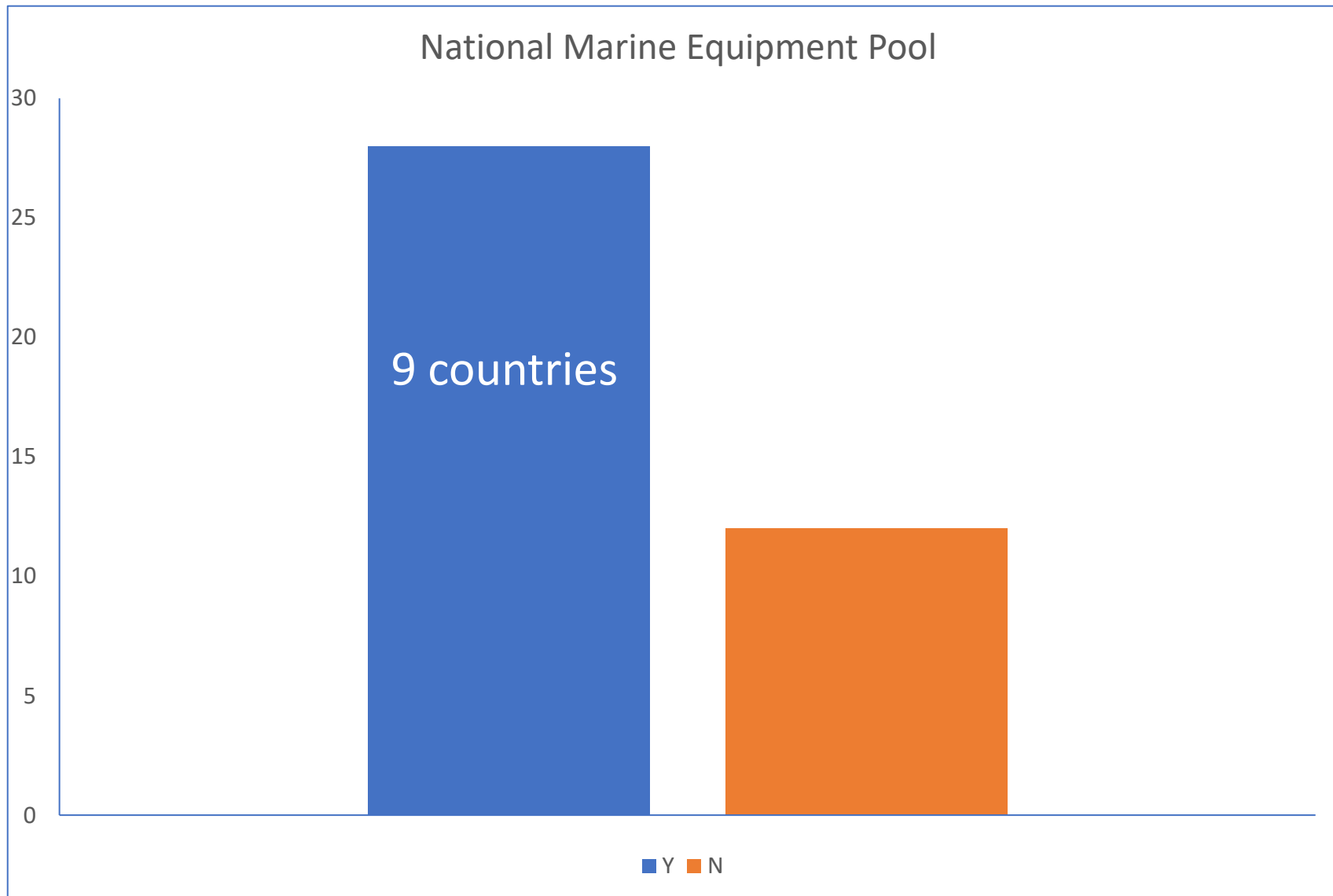


## Refit plans



# LEXI investment plans





## NMEP Ownership & Management

